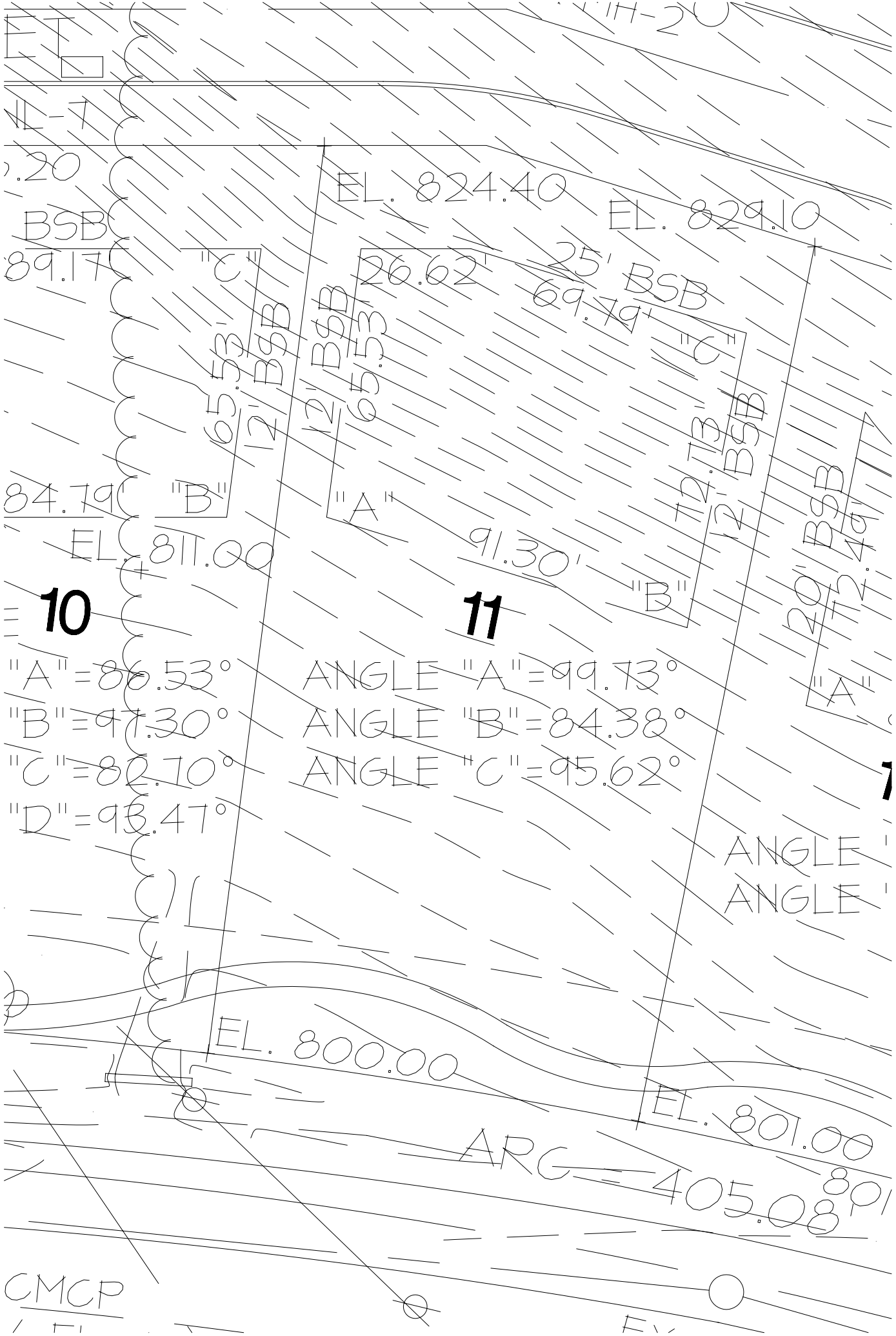


K11-20



20

BSB
89.17

EL. 824.40

EL. 829.10

65.53' C
12" BSB

12" BSB
65.53'

26.62'

25' BSB
69.79'

12.13' C
12" BSB

84.79
EL. 811.00

91.30'

20' BSB
72.46'

10

11

"A" = 86.53°
 "B" = 97.30°
 "C" = 80.70°
 "D" = 93.47°

ANGLE "A" = 99.73°
 ANGLE "B" = 84.38°
 ANGLE "C" = 95.62°

ANGLE
ANGLE

EL. 800.00

EL. 801.00

ARG = 405.08°

CMCP

F